



PARTNER: Tetra Pak Production d.o.o, Serbia



# Tetra Pak support to InnHF

*Innovation through human factors in risk analysis and management*

**MID-TERM REVIEW MEETING**

**Torino, 31 October 2013**





**PARTNER: Tetra Pak Production d.o.o, Serbia**



- ▶ 42 packaging material plants
- ▶ Present in more than 170 countries
- ▶ 22.000 employees
- ▶ 166 billion packages sold
- ▶ 60th anniversary this year



Tetra Fino



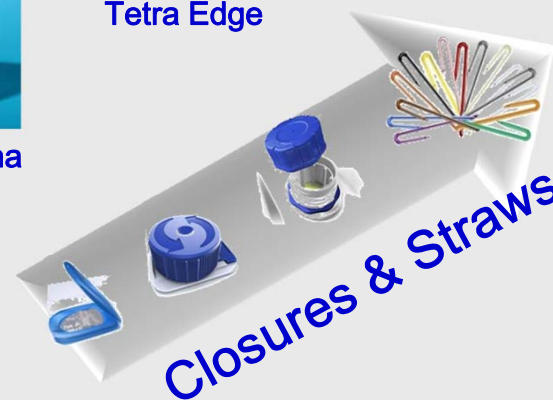
Tetra Gemina



Tetra Edge



Tetra Evero  
Aseptic





### Printing Press

- Installed in 2009
- Working width 1650
- 7 Printing units
- Speed – 600 m/min



### Coating Machine

- Installed in 1978 – **Rebuild 2013**
- Working width 1650
- Speed – 600 m/min



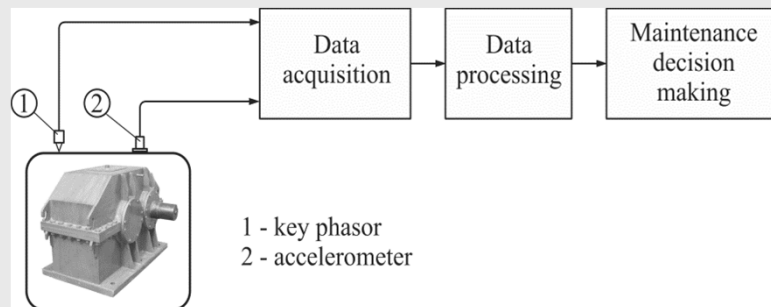
### IMS RCX Slitter

- Installed in 1982
- Speed 1000 m/min

### T2 Slitter

- Installed in 2006
- Speed 1000 m/min

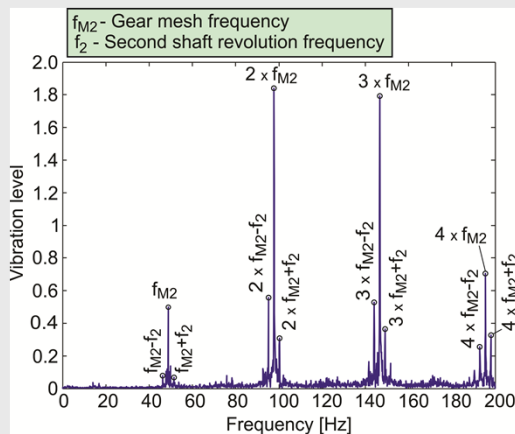
## Contribution to project – research ideas



Measurements performed  
– data to be analyzed

# Objectives within the INNHF project:

Some analysis results already available



Focus Area: Rolling bearing lifespan risk analysis  
 Candidate: Tsiafis Christos

Research work results to be published in scientific paper

## Training opportunities:

- WCM (World Class Manufacturing)
- RCM (Reliability Centered Maintenance)
- FMEA Analysis
- Risk assessment – practical implementation
- OHSAS Standard
- IAR (Identification and Analysis of Risk)
- ...

***“ There’s no limit  
for our improvements “***

